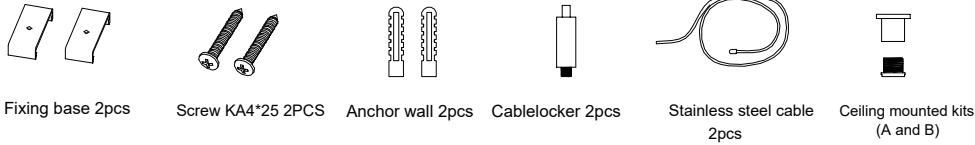


Installation Instructions of LED Linear Light — Suspension Mounting

1. Installation Kits



2. Installation Steps for Single Linear Light

①

LED linear	Length
4F:1173mm	973±10mm
6F:1758mm	1558±10mm

Distance between 2 drill holes

②

Drill two holes matching the size of M4 screws on the ceiling as shown above.

③

Tap the wall anchor into the hole.

④

Pass KA4*25 screw through the ceiling mounted kits B, and then inserted into wall anchor. Lead the stainless steel cable out of the ceiling mounted kits A, then twist the ceiling mounted kits B into the ceiling mounted kits A.

⑤

Thread the stainless cable into the hole by pushing the cylindrical thread locker in the direction of the arrow as shown.

⑥

Remove end cap and AC wire inlet cover as shown.

⑦

Insert 2pcs fixing bases into the grooves of the linear light respectively as shown in the figure.

⑧

Screw the thread locker into the screw hole to lock M-type fixing base and linear light.

⑨

Open the knock-out hole on the wire inlet cover, insert the mains AC wire and dimming wire (if needed) into the knock-out hole.

⑩

Connect live (L-black), neutral (N-white), earth wire (GND-green) and dimming wire (dim+ purple, dim- pink. If dimming is needed).

⑪

Put the AC wire inlet cover/end cap back in place.

⑫

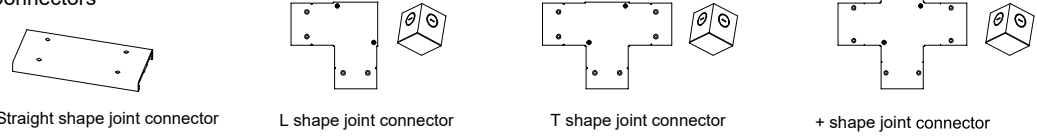
Adjust the height and parallelism through the cable locker. Lit the linear and finish installation.

⚠️ Make sure power off before installation or disassembly.

⚠️ Two workers are needed to install the linear.

Multi shapes installation instruction: Straight, L, T and +

Connectors



1. Straight shape joint installation steps: multiple linear lights & cable-suspended mounting

①

LED linear	Length 1	Length 2
4F:1173mm	973±10mm	1168±10mm
6F:1758mm	1558±10mm	1753±10mm

Distance between mounting holes

Drill holes as the distance above. Install the stainless steel cable as steps light as ② ③ ④ ⑤ of single linear shown in the figure.

②

Install LED Linear 1 as the installation steps ⑥ ⑦ ⑧ ⑨ ⑩ ⑪ of single linear as shown in the figure.

③

Remove end cap and AC wire inlet cover of linear 2.

④

Connect live (L-black), neutral (N-white), earth wire (GND-green) and dimming wire between input end of linear 1 and output end of linear 2. Put the AC wire inlet cover back in place.

⑤

Insert connector into the groove of linear light as shown and center it on the c of two linear light.

⑥

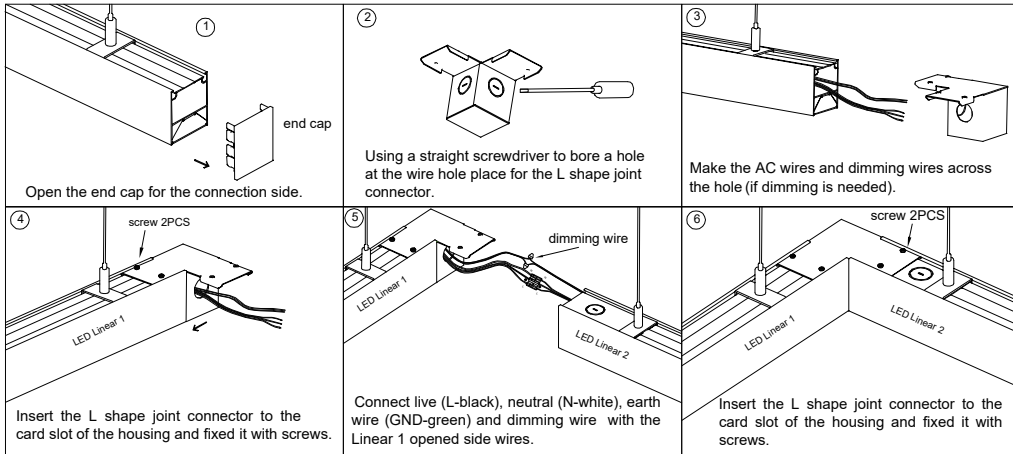
LED linear can be jointed together as needed, but the total number of fixtures should be no more than 7pcs.

Lock and tighten the screw in the screw hole by electrical tools.

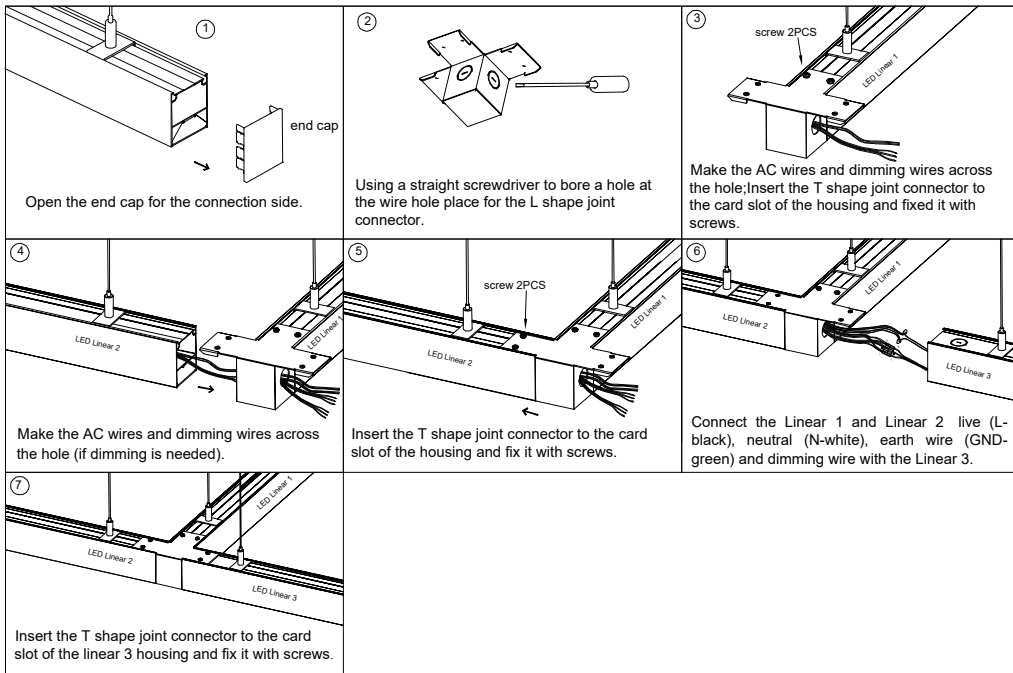
⑦

Connect linear light in line following the above steps. Adjust the height and parallelism through the cable locker. Lit the linear and finish installation.

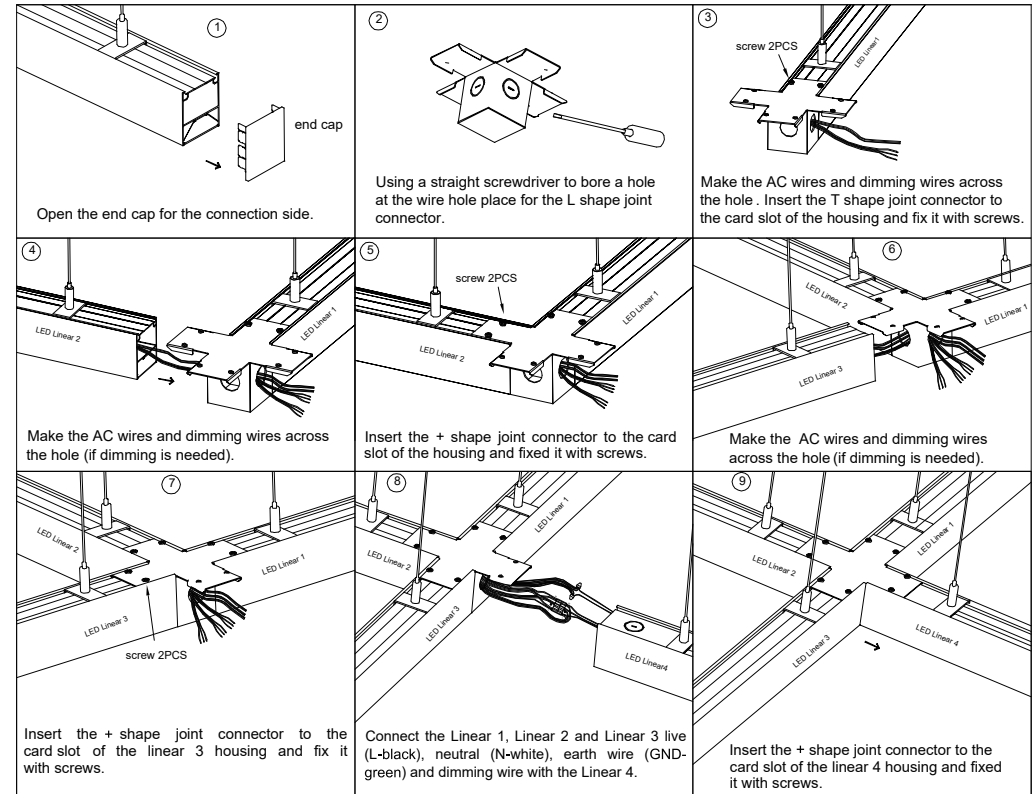
2. L shape joint installation steps:



3. T shape joint installation steps:



4. + shape joint installation steps:

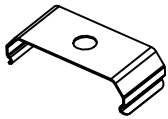


Instructions for CCT and wattage adjustable led linear light

Length	CCT	Wattage
4F	3500K/4000K/5000K	30W/35W/40W
6F	3500K/4000K/5000K	40W/45W/50W

Installation Instructions of LED Linear Light — Surface Mounting

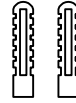
1. Installation Kits



Celling clip 2pcs



Screw KA4*25 2PCS



Anchor wall 2pcs

2. Installation Steps for Single Linear Light

<p>①</p> <p>Input AC100~277V</p> <p>L±10mm</p> <p>Linear light</p> <p>Distance between 2 drill holes</p> <table border="1" data-bbox="584 752 884 831"> <thead> <tr> <th>LED linear</th> <th>Length</th> </tr> </thead> <tbody> <tr> <td>4F: 1173mm</td> <td>973±10mm</td> </tr> <tr> <td>6F: 1758mm</td> <td>1558±10mm</td> </tr> </tbody> </table>	LED linear	Length	4F: 1173mm	973±10mm	6F: 1758mm	1558±10mm	<p>②</p> <p>as the picture shows: Drilling holes on the ceiling, the drilling position should keep a straight line, and shouldn't be skewed; the size of the hole should match the screw</p>
LED linear	Length						
4F: 1173mm	973±10mm						
6F: 1758mm	1558±10mm						
<p>③</p> <p>Input AC100~277V</p> <p>Lead AC wire and dimmable wire from the ceiling to the installed location of the light (if dimming is not necessary, there is no need to connect the dimming wire)</p>	<p>④</p> <p>Input AC100~277V</p> <p>Tap the wall anchor into the hole.</p>	<p>⑤</p> <p>Input AC100~277V</p> <p>Pass the screw through the ceiling clip, and then drill into the plastic expansion tube. Note that the ceiling clip should be placed as shown in the figure, keep the same direction, and cannot be skewed.</p>					
<p>⑥</p> <p>AC wire inlet cover</p> <p>end cap</p> <p>Remove end cap and AC wire inlet cover as shown.</p>	<p>⑦</p> <p>Metal hose</p> <p>AC wire inlet cover</p> <p>In put AC100~277V</p> <p>Open the knock-out hole on the wire inlet cover, insert the mains AC wire and dimming wire (if needed) into the knock-out hole.</p>	<p>⑧</p> <p>Dimming wire</p> <p>Input AC100~277V</p> <p>Linear light</p> <p>AC Terminal block</p> <p>Connect live (L), neutral (N), earth wire (GND) and dimming wire (if dimming is needed).</p>					
<p>⑨</p> <p>Put the AC wire inlet cover/end cap back in place.</p>	<p>⑩</p> <p>Input AC100~277V</p> <p>Linear light</p> <p>As shown in the picture, snap the linear light into the ceiling clip.</p>	<p>⑪</p> <p>Input AC100~277V</p> <p>Linear light</p> <p>Installation complete, power on, and lighting confirmation.</p>					

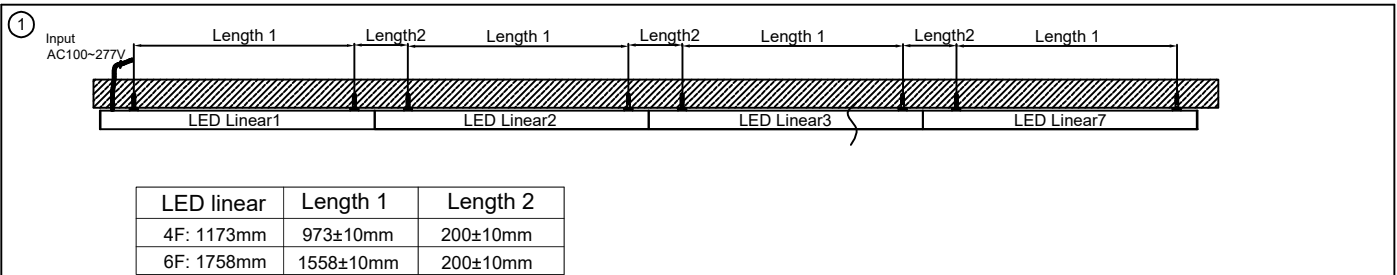


Before installation, the mains switch should be disconnected to avoid the risk of electric shock.



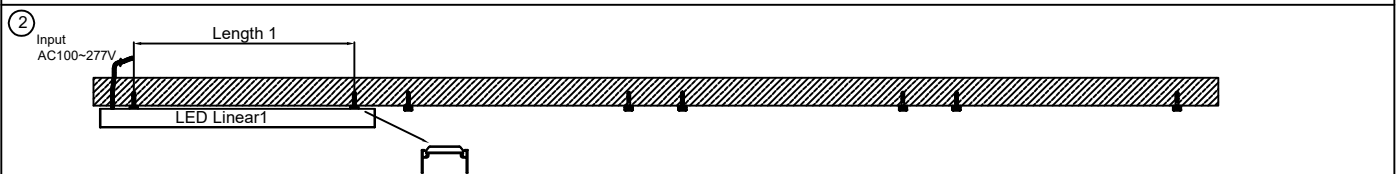
Two workers are needed to install the linear.

3. Multiple LED Linear Lights: surface mounting steps

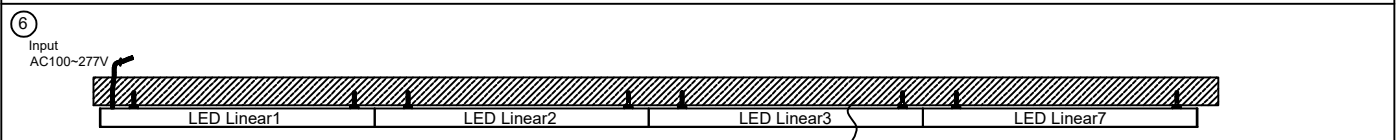
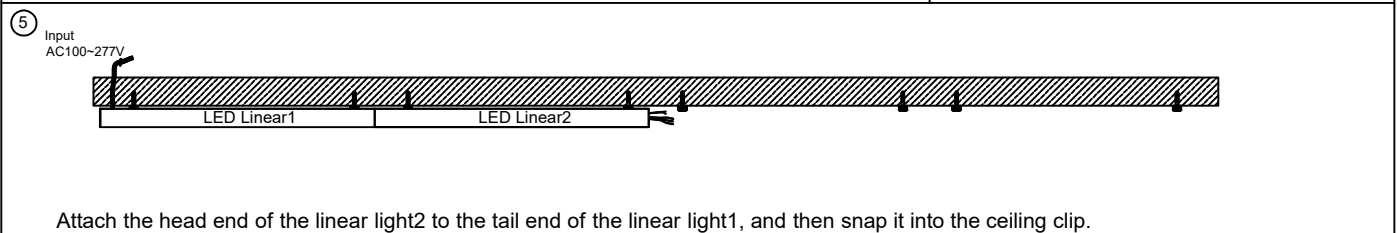
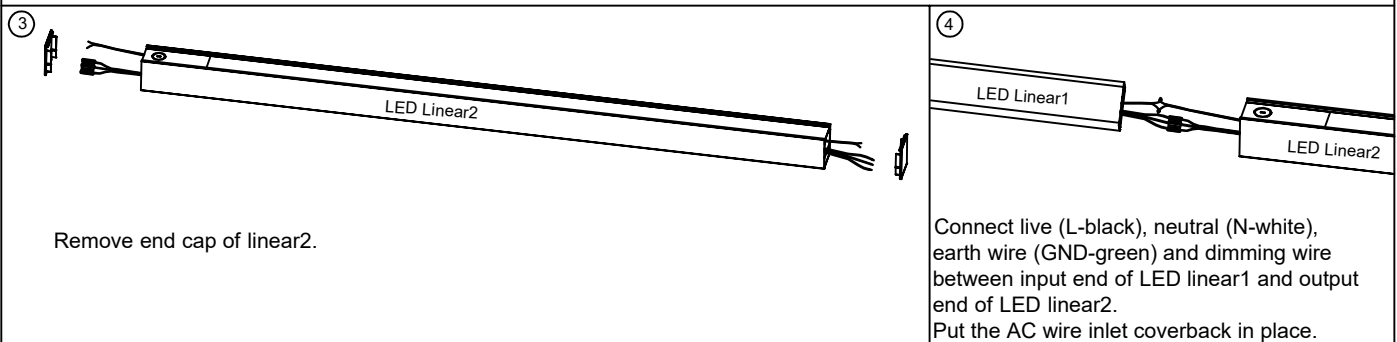


Drill holes as the distance above. Install the stainless steel cable as steps ②③④⑤⑥ of single linear light as shown in the figure.

Note: The position of drilling holes in the ceiling should be kept in a straight line, and should not be skewed; otherwise, the installation of lamps will be affected.



Install LED Linear 1 as the installation steps ⑦⑧⑨⑩⑪⑫ of single linear light as shown in the figure.



Follow the above method to splice together. Installation complete, power on, and lighting confirmation.